



The Lilydale Legend

The official newsletter of Lilydale Primary School

*Proud of our Past
Educating for
the Future*

Vision and Values Evening

Thank you to all the staff, students and parents who attended the Vision and Values evening on Tuesday. It was a fantastic event that focused on setting the direction for the school over the next four years whilst also having a lot of fun into the bargain. Everybody joined in with quizzes, building projects, challenges and games. After they completed each activity they then voted as to which Value they would like to see at the school. We also enjoyed some lovely pizza and thought about the vision for the school. You will now have your chance to have your say. Letters have been sent out this week for you to consider the Values and Vision that we have at the school. Please ensure you return your vote by Friday 28th February and then we will announce what our vision and values will be for the next four years on Friday 7th March. Thanks also to Grace, Amelie, Caleb and Lachie for presenting what the Values meant to them.

Parent Teacher interviews next week

As you are aware the Parent teacher Interviews next week are face to face unless you request otherwise. Please let the teacher know if you require a Webex meeting. Sorry for any confusion caused by our booking system.



Message from Ella, Phoebe and Matilda about the Bookswap

I am Ella, I am Matilda and I am Phoebe.

On Fridays, we will be running a book swap stall where students can take a book home that they like. You can also bring in a book that you don't want anymore. If you have any unwanted books that you would like to donate to this stall we would be delighted to receive them. Please leave these at the office for Mr Weaver to collect. Hopefully the students will be able to find a book that they love. Please ask your child to come to our stall outside the gym every Friday.



100 Years Competition

Just a reminder that the 'What will the school look like in 100 years' Competition closes on Friday 28th February. Please encourage your child to take part, templates are available from the School Office.

School Council Election

An election is to be conducted for members of the school council of Lilydale Primary School. Nomination forms may be obtained from the school office and must be lodged by 4.00 pm on Friday 21st February 2025. Should a Ballot be necessary the ballot will close at 4.00 pm on Friday 28th February 2025. Following the closing of nominations a list of the nominations received will be posted at the school. The terms of office, membership categories and number of positions in each membership category open for election are as follows:

- Parent member from the day after the date of the declaration of the poll in 2024 to and inclusive of the date of the declaration of the poll in 2026 - 4
- DET employee member from the day after the date of the declaration of the poll in 2024 to and inclusive of the date of the declaration of the poll in 2026 - 1

If the number of nominations is less than the number of vacancies, a notice to that effect and calling for further nominations will be posted in a prominent position at the school.

Have a great week

Andrew



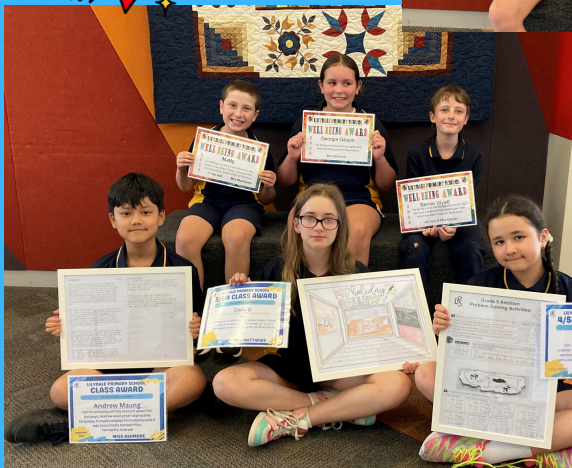


Award Winners

Proud of our Past
Educating for
the Future



AWESOME



Gr 5/6 Inter School Sport

SPORT	WINNER	SCORE
Basketball (girls)	Lilydale	No Team
Basketball (Open)	Lilydale	13-10
Rugby League Tag	Lilydale	7-3
T-ball	Lilydale	21-7
Hot Shots Tennis	Lilydale	9-6

FANTASTIC

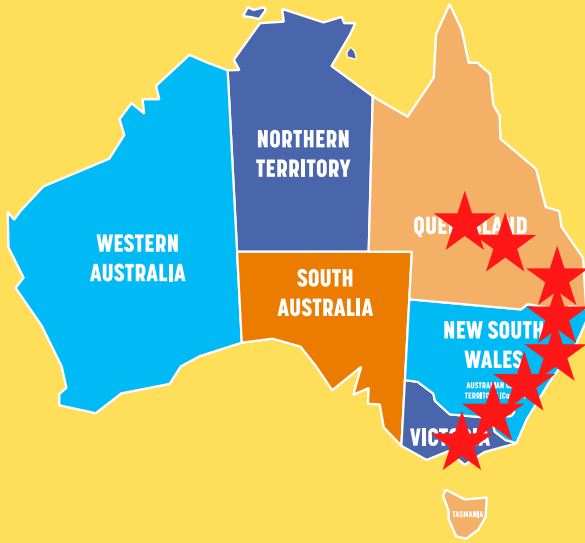
Last Friday, Lilydale PS played Manchester PS. We had a clean sweep of all sports. A big congratulations to Alex (Tee Ball), Georgia (Mixed Basketball), Hudson (Rugby Tag), Lachie (Tennis) and Macey (Girls Basketball) for winning the Community Sports Awards.





Proud of our Past
Educating for
the Future

Run Around Australia Challenge



We are now 777km out of Brisbane, in Murweh, on our way to Darwin. We have run a total of 2572km.

Gr 5/6 Parliament Incursion

On Monday the 10th of February the Gr 5/6 students attended an incursion run by the Parliament of Victoria. The students we involved in an interactive role play where the students took on the role of members and officers of the Parliament. The students were involved in the law-making process firsthand by acting out the debate and following the passage of a bill through the House. 6A passed a bill on banning gambling advertising on TV.



Mental Health and Wellbeing Leader (MHWL) Miss Melanie Blyth

At our school, we prioritise the wellbeing of every student. Our Mental Health and Wellbeing Leader (MHWL) plays a key role in supporting students' social, emotional, and mental wellbeing. This includes promoting positive mental health strategies, providing resources for students and families, and working with teachers and families, and supporting a safe and supportive school environment. This is a new role at LPS and I look forward to sharing and working with the LPS community to build better outcomes for all students.



The Sports Box, donated by Bunnings, is located under cover outside the BER building. It is opened before school and is closed at the end of lunch time. The kids are loving the access to the sporting equipment.

We have collected
\$736.70

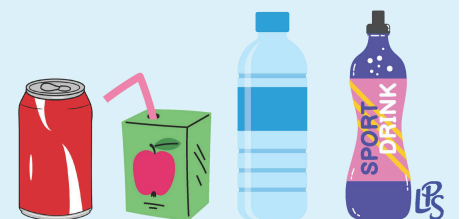


TO HELP US RAISE FUNDS FOR SPORTS EQUIPMENT

BRING IN YOUR UNCRUSHED CANS, CARTONS AND BOTTLES

(NO GLASS)

PLEASE DEPOSIT YOUR CONTAINERS IN YOUR SHARED CLASSROOM TUB



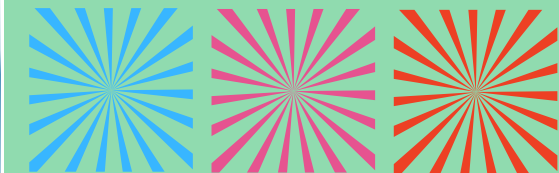


Vision and Values 2025

Proud of our Past
Educating for
the Future



Thank you to staff, parents and students for attending the Vision and Values night. It was a fantastic event that focused on setting the direction for the school over the next four years whilst also having a lot of fun.



thank you





SCHEDULE 4: NOTICE OF ELECTION AND CALL FOR NOMINATIONS Lilydale Primary School

An election is to be conducted for members of the school council of Lilydale Primary School. Nomination forms may be obtained from the school office and must be lodged by 4.00 pm on Friday 21st February 2025. Should a Ballot be necessary the ballot will close at 4.00 pm on Friday 28th February 2025. Following the closing of nominations a list of the nominations received will be posted at the school.

The terms of office, membership categories and number of positions in each membership category open for election are as follows:

MEMBERSHIP CATEGORY	TERM OF OFFICE	NUMBER OF POSITIONS
Parent member	From the day after the date of the declaration of the poll in 2024 to and inclusive of the date of the declaration of the poll in 2026	4
DET employee member	From the day after the date of the declaration of the poll in 2024 To and inclusive of the date of the declaration of the poll in 2026	1

If the number of nominations is less than the number of vacancies, a notice to that effect and calling for further nominations will be posted in a prominent position at the school.

Camps, Sports and Excursions fund eligibility

Below are the criteria used to determine a student's eligibility for the Camps, Sports and Excursions Fund (CSEF).

Criteria 1 – Eligibility

To be eligible* for the fund, a mature minor of sixteen years of age or over, a parent or legal guardian of a student attending a registered Government or non-government Victorian primary or secondary school must:

- on the first day of Term one; or
 - on the first day of Term two.
- a) Be an eligible beneficiary within the meaning of the State Concessions Act 2004, that is, be a holder of Veterans Affairs Gold Card or be an eligible Centrelink Health Care Card (HCC) or Pensioner Concession Card (PCC) holder; or
 - b) Be a temporary foster parent; and
 - c) Submit an application to the school by the due date.

* A special consideration eligibility category also exists. For more information, see: [Camps, Sports and Excursions Fund \(CSEF\): Eligibility | education.vic.gov.au](https://www.education.vic.gov.au/csef/eligibility)

Mature minors or parents who receive a Carer Allowance on behalf of a child, or any other benefit or allowance not income tested by Centrelink, are not eligible for the CSEF unless they also comply with one of (a) or (b) above.

Criteria 2 - Be of school age and attend school in Victoria

School is compulsory for all Victorian children aged between six and seventeen years of age inclusive.

For the purposes of CSEF, students may be eligible for assistance if they attend a Victorian registered primary or secondary school. Typically, these students are aged between five and eighteen years inclusive.

CSEF is not payable to students' attending pre-school, kindergarten, home schooling, or TAFE.

Eligibility Date

For concession card holders, CSEF eligibility will be subject to the parent/legal guardian's concession card being successfully validated with Centrelink (see [Camps, Sports and Excursions Fund \(CSEF\): Policy | education.vic.gov.au](https://www.education.vic.gov.au/csef/policy)).

Payment amounts

CSEF payment amount

The CSEF is an annual payment to the school to be used towards camps, sports and/or excursion expenses for the benefit of the eligible student.

The CSEF is paid directly the school and will be allocated by the school towards camps, sports and/or excursion costs for your child. Please refer to the policy for the current rates.

For ungraded students, the rate payable is determined by the student's date of birth. For more information, see: [Camps, Sports and Excursions Fund \(CSEF\): Payment amounts | education.vic.gov.au](https://www.education.vic.gov.au/csef/payment-amounts)

Foundation and Year 7 government school students who are CSEF recipients are also eligible for a uniform voucher. Schools are required to make applications on behalf of parents, so please register your interest at the school.

How to complete the application form

NOTE: ALL SECTIONS MUST BE COMPLETED BY PARENT/LEGAL GUARDIAN

1. Complete the PARENT/LEGAL GUARDIAN DETAILS section.
Make sure that the Surname, First Name, and Customer Reference Number (CRN) details match those on your concession card. You will also need to provide your concession card to the school.
If you are claiming as a Foster Parent or a Veteran Affairs Pensioner, you will need to provide a copy of documentation confirming your status as a temporary Foster Parent or provide your Veterans Affairs Pensioner Gold card to the school.
2. Complete the STUDENT/S DETAILS section for students at this school.
3. Sign and date the form and return it to the school office as soon as possible.

CSEF payments cannot be claimed retrospectively for prior years.

Queries relating to CSEF eligibility and payments should be directed to the school.



Proud of our Past
Educating for
the Future



NEW PLAYERS WANTED

Lilydale Falcon Junior Football Club is looking for new players of all skill levels to come join the Falcons for season 2025.

Boys - U8's, 9's, 10's, 11's, 12's (2 sides), 14s & 17.5's

Girls - Under 8's, 10's, 12's & 14's

Half Priced registration for new players
Registrations starting from as low as \$25



Any questions or queries
please contact us at
lilydalejnr@efnl.org.au

scan to
register



REGISTRATIONS OPEN



SUNDAY
30
March 2025
10:00AM to 4:00PM

YARRA VALLEY Wool and Handicrafts SHOW

HAND DYED YARN • CRAFT STALLS
COMPETITIONS • FASHION PARADE
CWA SCONES • FOOD STALLS
DEMONSTRATIONS • SIT & STITCH SOCIAL

MOOROOLBARK COMMUNITY CENTRE
125 BRICE AVE, MOOROOLBARK

For more information & the full program, visit: celebratemooroolbark.com
or find us @yarravalleywoolandcraftshow

Proudly partnered with:
celebrate
mooroolbark



Proudly supported by:
Yarra
Ranges
Council

YARRA VALLEY WOOL & HANDICRAFTS SHOW 2025 COMPETITION



Unleash your creativity and showcase your talent at the 2025 Yarra Valley Wool and Handicrafts Show Competition! Whether you're a seasoned or budding crafter, we invite you to submit your best handmade items inspired by the 2025 Show theme of *Crafting Calm*. Entry to the competition is free and prizes will be awarded in various categories. All entries will be displayed for public viewing.

CATEGORY 1:
4 - 8 YEARS



Open category: enter any handmade item!
Inspiration includes knitting, crochet, embroidery, sewing, collages using wool or fabric.

CATEGORY 2:
9 - 12 YEARS

Open category: enter any handmade item!
Inspiration includes knitting, crochet, embroidery, sewing, collages using wool or fabric.

CATEGORY 3:
13 - 17 YEARS

- Knit / crochet a garment, or
- Upcycle a garment into something new

CATEGORY 4:
18 YEARS OR OVER

- Knit or crochet a garment, or
- Knit, crochet or weave a colourwork piece (garment, accessory, homewares)

The Yarra Valley Wool and Handicrafts Show is a not-for-profit event organised by the Celebrate Mooroobark Volunteer Committee.
Event Time & Date: 10am - 4pm, Sunday 30 March, 2025
Event Location: Mooroobark Community Centre, Brice Avenue

More information, please stay updated on
celebratemooroolbark.com



Proudly Supported By
Yarra
Ranges
Council

iROCK MUSIC SCHOOL



Lilydale
PRIMARY SCHOOL

iROCK@SCHOOL

WANNA ROCK AT LILYDALE PS?
WE ARE NOW ACCEPTING
EXPRESSIONS OF INTEREST
FOR TERM 1

INCLUDES:
TEAMS OF UP TO 4 STUDENTS
\$100 P/M*
8-10 LESSONS PER TERM
2 PERFORMANCES PER YEAR
CONDITIONS APPLY*

VOCALS, GUITAR, DRUMS, BASS, UKULELE AND KEYBOARD

Unleash your inner
ROCKSTAR

SEND US AN INQUIRY TODAY!
*THE INSTRUMENTS WE TEACH WILL BE RESPONSIBLE ON STUDENT INTEREST. PLEASE CONSIDER A SECOND INSTRUMENT IF WE DO NOT HAVE THE FUNDS TO PROVIDE YOUR FIRST CHOICE.



FLY INTO THE NEW SCHOOL YEAR WITH EXTEND!

BOOK FOR TERM 1 TODAY!

Extend is back for an exciting new year!

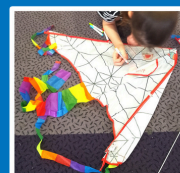
We hope you enjoyed your summer holidays, now it's time to fly into Term 1!

Join us as we open our doors for:

- Fun educational activities and games
- Fresh and healthy snacks provided every day!
- A supportive space for relaxing, homework and group play!

Soar into the school year hassle-free with Extend's quality service!

For more information on how to enrol and book, visit extend.com.au today!



SCAN HERE TO ENROL
& BOOK FOR TERM 1!



Upcoming Events

Proud of our Past
Educating for
the Future

TERM 1 2025

February

- Mon 17th Parent/teacher interviews 1/2 G and 1/2 S
 Tues 18th Parent/teacher interviews 1/2A, 3/4,
 3/4W and 5/6 M
 Wed 19th Parent/teacher interviews 4/5I and 6A

March

- Mon 3rd -
 Fri 7th Swimming program Prep - Gr 6
 Mon 10th Labour Day Public Holiday - student free day
 Wed 26th -
 Fri 28th Phillip Island camp Gr 5/6

DON'T FORGET

- Parent / teacher interviews next week
- Gr 5/6 camp progress payments due ASAP

Lilydale Primary School staff are on duty before school from 8.45am and after school until 3.45pm. Outside these times students will be unsupervised in the playground. If your child needs to arrive before this time in the morning or after the time in the afternoon please contact Extend at lilydale@extend.com.au to arrange for your child to attend before or after school care.

1800RESPECT

NATIONAL SEXUAL ASSAULT, DOMESTIC
FAMILY VIOLENCE COUNSELLING SERVICE

1800RESPECT.org.au 1800 737 732

2025 TERM ONE

- Thurs 30th Jan - Fri 4th April
- Tues 22nd April - Fri 4th July
- Mon 21st July - Fri 19th Sept
- Mon 6th Oct - Fri 19th Dec

CURRICULUM DAYS 2025

Tues 28 and Wed 29th Jan
 Tuesday 10th June
 Monday 25th August
 Monday 3rd November
 Professional Practice Day Mon
 24th Nov



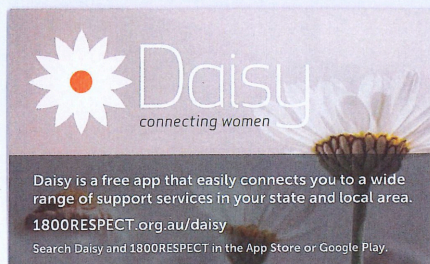
FRIDAY LUNCH ORDERS

Lunch Orders are available
on Friday's

Ordering cut off time is:

- 2pm for Daily Specials
- 9pm for ALL ORDERS
the Thursday prior

Place your order via the
Flexischools App



Lilydale Primary School

School Number 0876

63-65 Castella St, Lilydale

Tel: 9735 1642

Email: lilydale.ps@education.vic.gov.au



THE MEAT
INN PLACE

333 Main St Lilydale
lilydalemeats@gmail.com

tel:9738 7555

mob: 0408 032 360