



# The Lilydale Legend

The official newsletter of Lilydale Primary School

*Proud of our Past  
Educating for  
the Future*

## Welcome back

Welcome back to a new school year at Lilydale Primary School. I hope you have managed to have a rest and are now ready for another exciting year of learning. The staff have been working hard to prepare the programs and learning spaces for the year and I would like to thank them for their efforts. It has been great to see the student's smiling faces and get to talk to them about the amazing things they have done over the holidays. We have a great deal of students and families that are new to our school. Please make them feel welcome as they join our amazing community. We have a busy year ahead of us but if we work together I am sure that we will be able to achieve great things for our students.



## Sunscreen

As you know protection from the sun is very important for the students at our school and we always ensure the students wear sunhats during the first and fourth term. We also encourage the use of sunscreen. Please try to ensure that students have applied sunscreen before they come to school. We have sunscreen in each classroom for students to top up during the day. Please talk to your child about sun safety and if your child is allergic to sunscreen please let the class teacher know and make alternative arrangements for their skin care.



## Child Safety and Wellbeing

Lilydale Primary School is committed to providing an environment where students are safe and feel safe.

Our child safety framework is available at <https://www.lilydaleps.vic.edu.au>

It explains how we support and maintain child safety and wellbeing at Lilydale Primary School.

It includes our:

- Child Safety and Wellbeing Policy
- Child Safety Reporting and Responding Obligations Procedures, and
- Child Safety Code of Conduct, which outlines acceptable and unacceptable behaviours for all staff and volunteers at our school.

Our students and families are important partners in providing a child safe environment. These regular newsletter reminders are one of the ways we ensure our school community is aware of:

- our commitment to child safety, and
- how to provide feedback or raise child safety concerns.

If you have any concerns about child safety at any time, please contact Lilydale Primary School on 03 9735 1642. Any child safety complaints or concerns are treated seriously.

## New Desktop Computers

Thanks to Matt, Kate and family who has arranged for the donation of 13 desktop computers which will be used in the Grade 3/4 area. These are being set up and will be in classes soon. This will free up the iPads that can be used across the rest of the school.



## Vision and Values Evening 11th February

As part of the School Review process we are expected to look at the School Vision and Values and decide whether they are still what we, as a community, want to underpin the teaching and learning at our school. As part of this process we will be holding an evening of entertainment to celebrate our school Values and Vision. The evening will begin at 6pm on Tuesday 11th February and will last until about 7.30pm. This event is a whole school event so students, parents and grandparents are welcome to enjoy the fun. To encourage as much participation as possible we will be providing two slices of pizza and a drink for the donation of a gold coin. It is important that you have a say in setting the future direction of our school. I encourage you to attend, have your say and hopefully have some fun at the same time.

*Welcome back all. Have a great week.*



Andrew





# Award Winners

Proud of our Past  
Educating for  
the Future



**AWESOME!**



**FANTASTIC**



2025 Leadership Group

**Congratulations** to our Leadership Group for 2025. I'm sure they will do a terrific job in their role throughout the year. Thank you to Aaron Violi for presenting them with their badges at assembly.





# 2025 Classes

Proud of our Past  
Educating for  
the Future



Prep B



Prep G



1/2 A



1/2 G

Welcome  
**BACK TO**  
SCHOOL



1/2 S



3/4 E



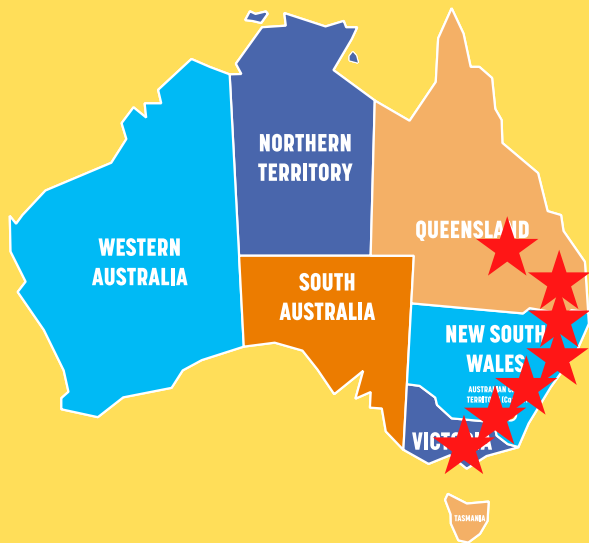
3/4 W





Proud of our Past  
Educating for  
the Future

## Run Around Australia Challenge



At the end of last year we had run a massive 2006.3km. All Gr 3-6's have started running laps each morning on our way to Darwin.

### Book Swap

On Fridays, some of our students will be running a book swap stall where students can take a book home that they like. Students can also bring in a book that they don't want anymore. If you have any unwanted books that you would like to donate to this stall we would be delighted to receive them. Thank you



### Recycling For Sports Equipment

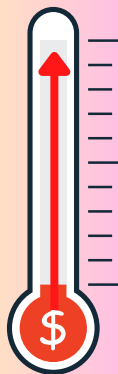
I would like to give a big thanks to Bunnings for donating our huge sports equipment storage container which will hold the sports equipment children can borrow during recess and lunch time. It is located near the entrance to the BER building and is open at 11am and closed at the end of lunch time. All children are able to borrow the sports equipment.

I have been busy collecting recycling over the holidays at the Mt Buffalo Caravan Park in Porepunkah. The campers contributed to the school raising an extra \$246.50. To date we now have \$736.70 that I can spend on our sports equipment.

The teachers will be asking the children in each grade to list five items they would like to borrow at recess and lunchtime.

Michelle

We have collected  
\$736.70

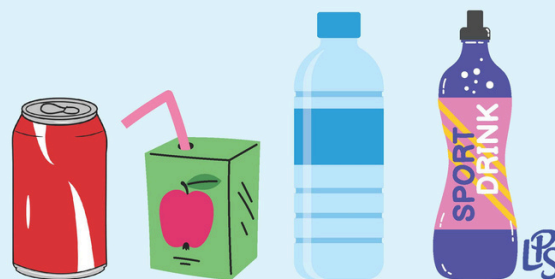


## TO HELP US RAISE FUNDS FOR SPORTS EQUIPMENT

BRING IN YOUR UNCRUSHED CANS, CARTONS AND BOTTLES

(NO GLASS)

PLEASE DEPOSIT YOUR CONTAINERS IN YOUR SHARED CLASSROOM TUB







## SCHEDULE 4: NOTICE OF ELECTION AND CALL FOR NOMINATIONS Lilydale Primary School

An election is to be conducted for members of the school council of Lilydale Primary School.

Nomination forms may be obtained from the school office and  
must be lodged by 4.00 pm on Friday 21st February 2025.

Should a Ballot be necessary the ballot will close at 4.00 pm on Friday 28th February 2025

Following the closing of nominations a list of the nominations received will be posted at the school.

The terms of office, membership categories and number of positions in each membership category open  
for election are as follows:

MEMBERSHIP CATEGORY	TERM OF OFFICE	NUMBER OF POSITIONS
Parent member	From the day after the date of the declaration of the poll in 2024 to and inclusive of the date of the declaration of the poll in 2026	4
DET employee member	From the day after the date of the declaration of the poll in 2024 To and inclusive of the date of the declaration of the poll in 2026	1

If the number of nominations is less than the number of vacancies, a notice to that effect and calling for further nominations will be posted in a prominent position at the school.

### Victorian State Teams

At various times throughout the school year, School Sport Victoria (District, Division, Region and State levels) communicates with schools about opportunities for elite sport students to be nominated to participate in competitions or state team trials.

I handed out a letter to all children in Grades 5 & 6 who would like to be considered.

The targeted sports include:

AFL, Cricket, Netball, Basketball, Tennis, Swimming, Diving, Athletics, Cross Country, Rugby League, Golf, Soccer, Softball/T-Ball, Hockey, Volleyball + others.

If your child fits within all three criteria points outlined below, and you are interested in them potentially taking part in an SSV event or trial, (if an opportunity arises throughout the year) please complete the form that was sent home and return this whole notice to Mrs Matthews by Friday 14th February, 2025. The short turn-around time is necessary to ensure that opportunities which may arise at the start of the school year are not missed.

#### CRITERIA

- Child is in Year 3\*, 4, 5 or 6 in 2025.
- Child participates in a sport at an 'ELITE' level outside of school. (i.e. Rep Basketball/Netball in the top teams, Squad Swimming, AFL/Soccer Most Valuable Player Winner)
- Child demonstrates an acceptable level of behaviour within the school environment.

If you would like your child to try out and your child did not bring a letter home, please see Mrs Matthews before or after school and request one.

Thanks

Mrs Matthews





Proud of our Past  
Educating for  
the Future



Are you or your child looking for a fun, family focused small sporting club to get involved in for 2025?

**KILSYTH EAST NETBALL CLUB WANTS YOU!!**

We are looking for new players and coaches in all of our age groups – from age 7 and up of all abilities are welcome!

Interested?  
For more information:  
email: [kilsytheastnetballclub@gmail.com](mailto:kilsytheastnetballclub@gmail.com) or phone Sara - 0408 997 228

We train on Thursday nights from 6.30pm and play Saturdays at Pinks Reserve in Kilsyth  
New season starting now!

pro touch tennis  
ACADEMY



**Seville Tennis Club & Lilydale Tennis Club**  
**TENNIS COACHING**

- **Lessons for all ages 3+** With all new enrolments, children 13/u will receive a FREE tennis racquet and a FREE Hot Shots T-shirt!
- **Coaching program includes:**
  - Kinder Kids Groups (3-5yrs)
  - Hot Shots Groups & Matchplay (5-12yrs)
  - Group Lessons (12+)
  - Squads: development, advanced & high performance
  - Private & Semi-Private lessons
  - Adult Lessons - beginners to advanced
  - Ladies groups
  - Cardio Tennis
  - School Holiday Clinics
- Lessons available all year round
- Social tennis & competition options available



**Free Trial Lesson!!**

For more information or to book your trial lesson, please contact:

Phone: 0402 290 454

Email: [info@ptta.com.au](mailto:info@ptta.com.au)

Web: [www.ptta.com.au](http://www.ptta.com.au)



**LILYDALE JUNIOR FALCONS**  
*Netball Club*  
**2025 WINTER SEASON REGISTRATION**

SEASON DATES: SAT 1ST MARCH - SAT 6TH SEPTEMBER 2025

PRE-SEASON COME & TRY / BRING A FRIEND TO TRAINING:

FRI 31ST JAN & 7TH FEB 2025

4-5PM 9U, 11U

5-6PM 13U, 15U, 17U

LILYDALE HEIGHTS COLLEGE GYM



2025 Club Fees: \$265  
Netball Victoria Membership \$70  
Net Set Go NVM \$99

SCAN OR CODE TO REGISTER

Registrations Close  
Feb 7th 2025

Note: please select the youngest available age when registering. Players born 2016-2019 must register as GO participants.

CONTACT US FOR MORE INFO  
[lilydalefalconsnetballclub@gmail.com](mailto:lilydalefalconsnetballclub@gmail.com)



**Camps, Sports and Excursions fund eligibility**

Below are the criteria used to determine a student's eligibility for the Camps, Sports and Excursions Fund (CSEF).

**Criteria 1 – Eligibility**

To be eligible\* for the fund, a mature minor of sixteen years of age or over, a parent or legal guardian of a student attending a registered Government or non-government Victorian primary or secondary school must:

- on the first day of Term one; or
- on the first day of Term two.

- a) Be an eligible beneficiary within the meaning of the State Concessions Act 2004, that is, be a holder of Veterans Affairs Gold Card or be an eligible Centrelink Health Care Card (HCC) or Pensioner Concession Card (PCC) holder; or
- b) Be a temporary foster parent; and
- c) Submit an application to the school by the due date.

\* A special consideration eligibility category also exists. For more information, see: [Camps, Sports and Excursions Fund \(CSEF\): Eligibility | education.vic.gov.au](http://Camps_Sports_and_Excursions_Fund_CSEF_Eligibility_education.vic.gov.au)

Mature minors or parents who receive a Carer Allowance on behalf of a child, or any other benefit or allowance not income tested by Centrelink, are not eligible for the CSEF unless they also comply with one of (a) or (b) above.

**Criteria 2 - Be of school age and attend school in Victoria**

School is compulsory for all Victorian children aged between six and seventeen years of age inclusive.

For the purposes of CSEF, students may be eligible for assistance if they attend a Victorian registered primary or secondary school. Typically, these students are aged between five and eighteen years inclusive.

CSEF is not payable to students' attending pre-school, kindergarten, home schooling, or TAFE.

**Eligibility Date**

For concession card holders, CSEF eligibility will be subject to the parent/legal guardian's concession card being successfully validated with Centrelink (see [Camps, Sports and Excursions Fund \(CSEF\): Policy | education.vic.gov.au](http://Camps_Sports_and_Excursions_Fund_CSEF_Policy_education.vic.gov.au)).

**Payment amounts**

**CSEF payment amount**

The CSEF is an annual payment to the school to be used towards camps, sports and/or excursion expenses for the benefit of the eligible student.

The CSEF is paid directly to the school and will be allocated by the school towards camps, sports and/or excursion costs for your child. Please refer to the policy for the current rates.

**For ungraded students**, the rate payable is determined by the student's date of birth. For more information, see: [Camps, Sports and Excursions Fund \(CSEF\): Payment amounts | education.vic.gov.au](http://Camps_Sports_and_Excursions_Fund_CSEF_Payment_amounts_education.vic.gov.au)

**Foundation and Year 7 government school students** who are CSEF recipients are also eligible for a uniform voucher. Schools are required to make applications on behalf of parents, so please register your interest at the school.

**How to complete the application form**

**NOTE: ALL SECTIONS MUST BE COMPLETED BY PARENT/LEGAL GUARDIAN**

1. Complete the PARENT/LEGAL GUARDIAN DETAILS section. Make sure that the Surname, First Name, and Customer Reference Number (CRN) details match those on your concession card. You will also need to provide your concession card to the school. If you are claiming as a Foster Parent or a Veteran Affairs Pensioner, you will need to provide a copy of documentation confirming your status as a temporary Foster Parent or provide your Veterans Affairs Pensioner Gold card to the school.
2. Complete the STUDENT/S DETAILS section for students at this school.
3. Sign and date the form and return it to the school office as soon as possible.

CSEF payments cannot be claimed retrospectively for prior years.

Queries relating to CSEF eligibility and payments should be directed to the school.





Proud of our Past  
Educating for  
the Future

**GET UP TO  
3 FREE BOOKS  
WHEN YOU ORDER  
ON ISSUE 1**

Every LOOP order earns a **\$5 PROMO CODE** to spend on Issue 2!

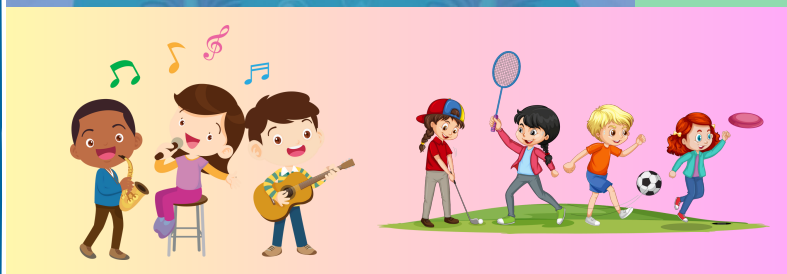
Offers are valid once per issue on LOOP Orders only. See LOOP for Terms & Conditions.

Welcome to another year of Scholastic Book Club. **Issue #1 is now out and is due back by Friday 14th February.**

Have you tried the LOOP online payment system yet? Orders that are placed online do not require paper order forms as all information is sent directly to the school to be processed, organised and distributed. There are also some great promo offers for those who purchase online. This issue, there are free books up for grabs, as well as a \$5 coupon to be used next issue.

Students may of course still place orders through the school. Please ensure all cash orders are completed fully and have the exact money included.

**Any questions, please email Mrs. Orlando at [maria.orlando@education.vic.gov.au](mailto:maria.orlando@education.vic.gov.au)**



**REGISTRATIONS NOW OPEN!**

**M.L.B.C LAKERS BASKETBALL CLUB**

**NEW PLAYERS WELCOME  
CALL OUR HOTLINE: 1300 525 377**

**GIRLS ENQUIRIES**  
Email: [girls@mlbclakers.com.au](mailto:girls@mlbclakers.com.au)

- \*Girls Under 11 play Tuesday
- \*Girls Over 12 play Wednesday
- Training Venue - Mount Lilydale Mercy College (The Doyle Centre)
- Games are scheduled at Kilsyth, Lilydale, Melba or Oxley Stadlums

**BOYS ENQUIRIES**  
Email: [boys@mlbclakers.com.au](mailto:boys@mlbclakers.com.au)

- \*Boys play Saturday

**#liveitloveitlakers**

Visit our website: [www.mlbclakers.com.au](http://www.mlbclakers.com.au) for more information

**iROCK MUSIC SCHOOL**

**Lilydale PRIMARY SCHOOL**

**IROCK@SCHOOL**

**WANNA ROCK AT LILYDALE PS?  
WE ARE NOW ACCEPTING  
EXPRESSIONS OF INTEREST  
FOR TERM 1**

**INCLUDES:  
TEAMS OF UP TO 4 STUDENTS  
\$100 P/M\*  
8-10 LESSONS PER TERM  
2 PERFORMANCES PER YEAR**

CONDITIONS APPLY\*

VOCALS, GUITAR, DRUMS, BASS, UKULELE AND KEYBOARD

Unleash your inner **ROCKSTAR**

SEND US AN INQUIRY TODAY!  
THE INSTRUMENTS WE TEACH WILL BE DEPENDANT ON STUDENTS' INTEREST. PLEASE CONSIDER A SECOND INSTRUMENT IF WE DO NOT HAVE THE NUMBERS TO PROVIDE YOUR FIRST CHOICE

**SUMMER SEASON RUNS THROUGH TERMS 4 & 1**

**WINTER SEASON RUNS THROUGH TERMS 2 & 3**

**Kids IRISH DANCE**

**FREE TRIAL**

**VICTORIAN IRISH DANCE ACADEMY**

Fun, family-friendly Irish dance classes for all abilities, from complete beginner to advanced. Contact us now for more information or to book a free trial class.

**Tecoma Mon, Thurs, Sat  
Mt Evelyn Tuesdays**

[www.victorianirishdance.com](http://www.victorianirishdance.com) **LEARN MORE** 0434 517 636





# Upcoming Events

Proud of our Past  
Educating for  
the Future

## TERM 1 2025

### February

Tues 11th	Vision and Values evening 6-7:30pm
Mon 17th	Parent/teacher interviews 1/2 G and 1/2 S
Tues 18th	Parent/teacher interviews 1/2A, 3/4, 3/4W and 5/6 M
Wed 19th	Parent/teacher interviews 4/5I and 6A

### March

Mon 3rd -	
Fri 7th	Swimming program Prep - Gr 6
Mon 10th	Labour Day Public Holiday - student free day

## DON'T FORGET

- swimming permission form due Feb 13th
- Gr 5/6 camp progress payments due ASAP
- Vision and Values evening Tues 11th Feb 6pm - 7:30pm

Lilydale Primary School staff are on duty before school from 8.45am and after school until 3.45pm. Outside these times students will be unsupervised in the playground. If your child needs to arrive before this time in the morning or after the time in the afternoon please contact Extend at [lilydale@extend.com.au](mailto:lilydale@extend.com.au) to arrange for your child to attend before or after school care.

## 1800RESPECT

NATIONAL SEXUAL ASSAULT, DOMESTIC  
FAMILY VIOLENCE COUNSELLING SERVICE

1800RESPECT.org.au 1800 737 732

### 2025 TERM ONE

- Thurs 30th Jan - Fri 4th April
- Tues 22nd April - Fri 4th July
- Mon 21st July - Fri 19th Sept
- Mon 6th Oct - Fri 19th Dec

### CURRICULUM DAYS 2025

Tues 28 and Wed 29th Jan  
Tuesday 10th June  
Monday 25th August  
Monday 3rd November  
Professional Practice Day Mon  
24th Nov



## FRIDAY LUNCH ORDERS

Lunch Orders are available  
on Friday's

Ordering cut off time is:

- 2pm for Daily Specials
- 9pm for ALL ORDERS  
the Thursday prior

Place your order via the  
Flexischools App



Lilydale Primary School

School Number 0876

63-65 Castella St, Lilydale

Tel: 9735 1642

Email: [lilydale.ps@education.vic.gov.au](mailto:lilydale.ps@education.vic.gov.au)



THE MEAT  
INN PLACE

333 Main St Lilydale  
[lilydalemeats@gmail.com](mailto:lilydalemeats@gmail.com)  
tel:9738 7555  
mob: 0408 032 360