



# The Lilydale Legend

The official newsletter of Lilydale Primary School

*Proud of our Past  
Educating for  
the Future*

## Don't miss out on your chance to put in a Parent Educational Request Form

As you are aware you are able to put in a Parent Request form until Friday 27th October. The purpose of this form is to take into account your thoughts and feelings relating to the education of your child and their placement in a new class for 2024. We want to ensure that our Grade placement is informed and reflects the best practice for consulting with parents, students and teachers. The request you make on this form should be based on the educational needs of your child and who they would work well with to improve their learning potential. You may outline any considerations that you believe we should consider when placing your child into a new class, for example, a male teacher, separation from a particular child, students your child works well with and would have a positive impact on their learning. Parents/Guardians can NOT request a particular teacher. Students will be asked to nominate five children who they would like to be placed with in the following year. They will be placed with at least one of these students as selected by the teacher, providing it is not detrimental to their learning or to the learning of other students. This process is extremely complex with lots of different considerations for the staff to take into account and as a result it may not be possible for all requests to be granted.

## Working Bee Next Friday 20th October

Just a reminder to get your family together and let us know what pizza you would like when you attend the Working bee on Friday 20th October. The forms are available from the office and have also been posted on Sentral. If you are coming on the day we will need the following equipment to help us, **wheelbarrows, shovels, sandpaper, paint brushes, shears and concrete.** If you could bring any of those pieces of equipment this will supplement the materials we already have.



## Earrings

Please remember that the school uniform policy states that earrings should be studs or sleepers. I was witness to a student having an earring torn out and it was very unpleasant for everyone. It is vital that we keep our students safe and when they are playing at recess or taking part in sport this could cause injury if they do not have the correct earring in. Please talk to your child about why we enforce this policy and ensure that they are only wearing studs or sleepers to school.

## School Structure for 2024

As you can imagine the staff team are not only focused on this Term but also next year. We are regularly meeting to work out what will be the best structure for our students and school next year.

This may include expanding some year levels and reducing others depending on the numbers of students. We are also looking at our staffing and what staffing we can afford and how best to use the amazing talent we have to ensure our students get the best learning opportunities. Lots of work and lots of thinking with the occasional jedi mind trick is required to make this all work so we can reveal this to the community on the 24th November. You may need to wish us luck.



Have a great week



Andrew





# Award Winners

Proud of our Past  
Educating for  
the Future



**Congratulations to our Weekly Student of the Week and Community Values Award winners**



**Well Done to Mr Weaver for his dominoes display. An interesting way to display the effects of being absent from school.**

**Congratulations to the students below for their achievements in the ICAS assessments.**







Proud of our Past  
Educating for  
the Future



# Lilydale Primary School Annual Trivia Night

Saturday 14th October

Starting at 7pm in the BER Building

Join us for a fun night of Trivia, Games, Silent Auctions, Raffles and More!

Tickets \$15 per person

to be purchased from the office

Table maximum of 10 people, no minimum per table

If you would like to join a table, please advise when you purchase tickets

BYO Food and drinks

All funds raised go towards LPS

Enter  
to Win



As part of the Open Day at Animal Aid (see below), they are having a colouring competition. If you would like to enter, please come to the office to collect the Colouring Sheet. It must be completed and handed in at Animal Aid by October 25th

## Children's Week 2023 in Yarra Ranges

The United Nations Convention on the Rights of the Child Article 31 - "Children have the right to relax, play and to take part in activities they enjoy"

All events are FREE  
Events are suitable for children aged 0-12 years unless otherwise stated.

Drawing competition Saturday 21st - Sunday 29th October 2023  
During Children's Week submit your drawing to go into the draw for a book voucher.

Saturday 21st October	<p><b>Walk on Country 10am-11.30am - Badger Creek</b> Connect mind, body and spirit to the land around you with this On Country cultural walk. Suitable for children aged 4 years and over. Booking required</p> <p><b>Rhythms of The World 11am-7pm - Wesburn</b> Celebrating 5 different cultures through music, food and art! African drumming workshop and interactive dance performances. No booking required</p>
Monday 23rd October	<p><b>Little Garden Growers 10am-11.30am - Yarra Glen</b> Join the Community Garden team to decorate your own pot and plant a seedling. Suitable for children aged 3-6 years. Booking required</p>
Tuesday 24th October	<p><b>Teddy Bears Picnic 9.30am-11.30am - Yarra Junction</b> Bring along your teddy to enjoy a morning of activities and music. No booking required</p> <p><b>Reptiles and wildlife 10am-11am and 11.30-12.30pm - Kilsyth</b> Learn about the Australian bush and meet a diverse range of reptiles and marsupials. Suitable for children aged 2-6 years Booking required</p>
Wednesday 25th October	<p><b>Teddy Bears Picnic 10.30am-12.30pm - Olinda</b> Bring a picnic and your teddy and enjoy a range of activities with a focus on feeling connected and safe in our environment. Booking required</p> <p><b>Spooky Science 4pm-6pm - Lilydale</b> Don't be scared, have fun developing spooky science experiments. No booking required</p>
Thursday 26th October	<p><b>Pram Walk and Talk 9.30am-10.30am - Belgrave</b> Enjoy the natural surrounds and meet other local parents and carers as we walk around Birdland then enjoy a morning tea together under the trees. Morning tea provided - suitable for families with children in prams. Booking required</p> <p><b>Woori Kids Fest 3pm-6pm - Woori Yallock</b> Circus Workshops, market stalls, sausage sizzle, art activities, performers and raffle prizes No booking required</p>
Friday 27th October	<p><b>Sensory Play 9.30am-10.45am - Mt Evelyn</b> Singing, dancing and exploring while building on fine motor, literacy and numeracy skills through messy play. Suitable for children aged 1-5 years. Booking required</p> <p><b>Lizard Wizard 10am-11am and 11.30am-12.30pm - Montrose</b> Get up close to a variety of native animals including snakes, lizards, insects, and turtles! Suitable for children aged 2-6 years Booking required</p> <p><b>Story Time 10.30am-11.15am - Yarra Glen</b> Join Rachel from Your Library for an interactive story time. Suitable for children aged 0-5 years Booking required</p>



For more information about Children's Week or to book for an event visit:  
[www.yarraranges.vic.gov.au/Community/Family](http://www.yarraranges.vic.gov.au/Community/Family)

If you require support to book an event contact us at Yarra Ranges Council on:  
1300 368 333 / [earlyyears@yarraranges.vic.gov.au](mailto:earlyyears@yarraranges.vic.gov.au)

Yarra Ranges Council supports Children's Week in partnership with the Department of Education and community organisations across Yarra Ranges.



# KENNELS KICK-OFF!

Open Day and CELEBRATION of how far we've come!

Join us for:  
Fun family festivities  
Carnival foods  
Adoption specials  
Dog Show  
AND MORE!  
Dogs welcome!



COME SEE OUR  
NEW SHELTER  
KENNELS  
IN COLDSTREAM!

Sunday 29<sup>th</sup> October | 11:00am - 2:00pm  
Animal Aid, 35 Killara Road, Coldstream



# Upcoming Events

Proud of our Past  
Educating for  
the Future

## TERM 4 2023

### OCTOBER

Saturday 14th October

Tuesday 17th October

Wednesday 18th October

Friday 20th October

Wed 25th - Fri 27th October

Wednesday 25th October

Friday 27th October

Tuesday 31st October

School Trivia Night

School Council

Pathway to Prep - Reading

Working Bee 3:45 - 6:30pm

Grade 3/4 Camp

Pathway to Prep - Phonics

Final day to submit Parent Educational Requests

Halloween Disco Prep - 2 2:15 - 3:15pm

Gr 3-6 3:30 - 4:30pm



### NOVEMBER

Wed 1st November

Monday 6th November

Tuesday 7th November

Wednesday 8th November

Thursday 9th November

Friday 10th November

Tuesday 14th November

Wednesday 15th November

Friday 17th November

Mon 20 - 24 November

Thursday 23rd November

Tuesday 28th November

Pathway to Prep - Maths

Curriculum Day - Student Free Day

Melbourne Cup Holiday

Pathway to Prep - Writing

Gr 5/6 visit to Lilydale RSL

Remembrance Day Service

School Council

Pathway to Prep - Phonics

Gr 5/6 Community Sports Day

Dental Van Visit

Gr 1/2 Celebration Day

Prep 2024 Information Evening



### DECEMBER

Monday 4th December

Wednesday 6th December

Monday 11th December

Thursday 14th December

Friday 15th December

Tuesday 19th December

DECS Day



Christmas Carols

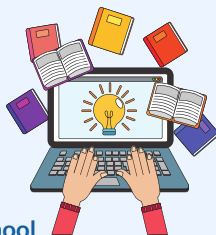


Gr 6 Responsibility Day

Gr 6 Graduation

Gr 6 Big Day Out

Class Parties



Lilydale Primary School

School Number 0876

63-65 Castella St, Lilydale

Tel: 9735 1642

Email: [lilydale.ps@education.vic.gov.au](mailto:lilydale.ps@education.vic.gov.au)

### 2023 TERM DATES

- Term 4 Oct 2 - Dec 20

### 2024 TERM DATES

- Term 1 Jan 30 - Mar 28
- Term 2 April 15 - June 28
- Term 3 July 15 - Sept 20
- Term 4 Oct 7 - Dec 20



## FRIDAY LUNCH ORDERS

Lunch Orders are available  
on Friday's

Ordering cut off time is:

- 2pm for Daily Specials
- 9pm for ALL ORDERS  
the Thursday prior

Place your order via the  
Flexischools App



## CURRICULUM DAYS 2023

Monday 6th November